

ProCare

Advanced Filtration Product Range 2022



Numatic

ProCare

Advanced, professional cleaning for the collection and **control of dust** and **hazardous substances.**



ProCare Contents

NuTec Industrial Range	4-5
Anti-Static	6-7
DustCare Range	8-9
TradeLine Range	10-11
H-Class Range	12-17
ProCare Accessories	18-19
Filter Bags	20
Testing Certification	21



Equipped with a sealed and disposable HEPA H13 filter cartridge, all dust is safely contained, meaning users can change the filter as and when they need to.

See page 14-15 for details.

NTD750/2003 Dust Control

Industrial cleaning, maintenance and dust control to the appropriate standards is in itself a science, which starts with the selection of heavy-duty vacuum cleaners for everyday use in the workplace.



Easy Dismount Facility



Filter Shaker System (NTD2003 Only)



NTD2003



NTD750

The NTD2003 operates on a cyclonic separation basis and is fitted as standard with our universal aluminium cyclonic entry adaptor, allowing the machine to be used in many varied applications.

INDUSTRIAL Use

Flooring, maintenance, metalworking and more.

NO DUST Cloud

High-efficiency, triple-layer, giant HepaFlo filter bags.

POWERFUL Cleaning

Heavy-duty Structofoam power head and long-life TwinFlo bypass motors.

ADVANCED Filtration

AirFlo filtration directs movement of air to enhance performance.

CABLE Replacement

NuCable system for quick and easy changing of cable.

Model	NTD750	NTD2003
Motor (W)	1000 X 2	1000 X 2
Use Type	Dry	Dry
Motor Only Airflow (L/sec)	98	98
Suction H ₂ O (MM)	2400	2400
Capacity (L)	35.0	60.0
Filter Type	PermaTex	PermaTex
Filter Bag Type	HepaFlo 4BH	HepaFlo 6BH
Filter Bag Layers	3	3
Power Cord (M)	10.0	10.0
Cleaning Range (M)	26.8	26.8
Hose Length (M)	2.4	2.4 (standard) 4.0 (large)
Tool Head Width (MM)	400	400
Weight (KG)	20.8	33.0
Dimensions WxLxH (MM)	510x510x960	560x660x1145
Kit (see page 19)	BA5	BA5

NTT2003 Dust Control

Bigger is quite often better for many industrial applications, providing a true workhorse, whatever the situation.

The NTT2003 goes one stage further with its 3-motor power head which, by design, provides greater airflow characteristics. Designed to perform well and give good results - year in, year out.

INDUSTRIAL Use

Providing total reliability in performance for all industries.

BUILT to Last

Heavy-duty Stainless Steel head and drum construction to endure years of industrial use.

POWERFUL Performance

Long-life, TwinFlo, 3-motor power head and Stainless Steel container.

EASE of Transit

Large rear wheels combined with full metal chassis for ease of movement.

CLEAN for Longer

Huge 60L capacity and cyclonic entry, allowing for large objects to enter without damage to the filter system.



NTT2003



Standard Hose Attachment



Easily Change to Larger Hose



Large Rear Wheels for Ease of Transit

Model	NTT2003
Motor (W)	1000 X 3
Use Type	Dry
Motor Only Airflow (L/sec)	147
Suction H ₂ O (MM)	2400
Capacity (L)	60.0
Filter Type	PermaTex
Filter Bag Type	HepaFlo 6BH
Filter Bag Layers	3
Power Cord (M)	10.0
Cleaning Range (M)	26.8
Hose Length (M)	2.4 (standard) 4.0 (large)
Tool Head Width (MM)	400
Weight (KG)	36.0
Dimensions WxLxH (MM)	560x660x1075
Kit (see page 19)	BA5

HAS750 Anti-Static

Within industry there are many activities or processes that generate airborne dust of an exceptionally fine nature and these must be treated with care and respect

For these applications, consideration should be given to an anti-static machine specification to safeguard against the generation of a static discharge, which is both uncomfortable for the operator and, in the worst case, potentially introducing a risk of combustion.

The HAS750 Anti-Static machine performs, in terms of cleaning, as a sound, efficient vacuum cleaner. Its build specification, together with its accessories, pays particular and detailed attention to the elimination of "Static" during operation. This situation is particularly prevalent in low humidity, dry areas of operation when collecting particularly fine dusts for extended periods, which can allow the build up of static electricity within the system.



BUILT to Last

The all-steel container is finished in NuTex. The specially formulated epoxy resin coating provides extreme durability and long service life.

ADVANCED Filtration

H-Class Compliant, engineered with HEPA13 filter module.

EASE of Transit

Large rear wheels and pull handle make for light work and multi-site use.

CLEAN for Longer

Huge 35L capacity meaning less time emptying, more time cleaning.

EASY, CLEAN & Safe Emptying

Easy release system ensures safe and clean emptying.

2-Stage Filter System
Double the protection with both a Primary and Secondary filter.

Built to Last
Heavy-duty steel head and container.

HEPA13 Filter Cartridge
Certified HEPA13 filtration down to 0.3 microns at 99.95% efficiency.

Sealed Drum
Dust cap seals the container to prevent contamination.

Giant HepaFlo Bags
Designed to collect fine dust for prolonged periods of time.

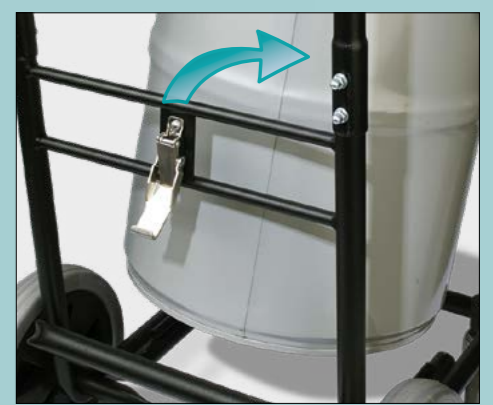
Great Mobility
Rotational castors allow for ease of movement.

Robust Chassis
Stainless Steel chassis provides ease of transit.

Large Anti-Static Wheels
Excellent mobility over the toughest of surfaces.



Low Flow Indicator



EASY RELEASE System
Simply unclip from the frame and remove drum for clean and safe emptying.

Model	HAS750
Motor (W)	960
Use Type	Dry
Motor Only Airflow (L/sec)	48
Suction H ₂ O (MM)	2500
Capacity (L)	35.0
Filter Type	PermaTex
Dust Hazard Class (to Annex 69 of EN 60335-2)	H
Filtration Efficiency Classification	H13 (EN1822)
Filter Bag Type	HepaFlo 4BH
Filter Bag Layers	3
Power Cord (M)	8.5
Cleaning Range (M)	25.6
Hose Length (M)	2.4
Tool Head Width (MM)	400
Weight (KG)	23.0
Dimensions WxLxH (MM)	510x510x960
Kit (see page 19)	HAS

NES/NED570 / NES/NED900 DustCare

Addressing the needs of fine dust applications found throughout the building industry, the DustCare range is a dedicated development of a range of professional machines.

AirFlo and MicroFlo Technology has introduced an exceptional upgrade in both performance and dust collection, incorporated into our heavy-duty Structofoam 570 and 900 professional models.

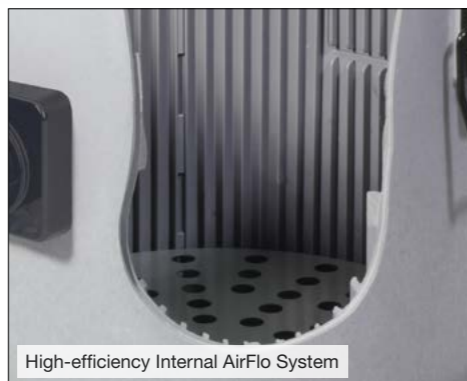


NED900A

NED570A



Low Flow and Bag Full Indicator



High-efficiency Internal AirFlo System



Plugged Easy Cable Change



Kit NH5 - 607160

INDUSTRIAL Use

Providing total reliability in performance for all industries.

BUILT to Last

Heavy-duty Structofoam head construction to endure years of industrial use.

IMPROVED Performance

Providing better airflow and fine dust pick-up with ribbed drum.

POWERFUL & Efficient

Patented AirFlo and MicroFlo Technology brings exceptional performance.

EASY, CLEAN & Safe Emptying

High-efficiency, triple-layer giant MicroFlo multi-stage dust bags for fine dust collection.

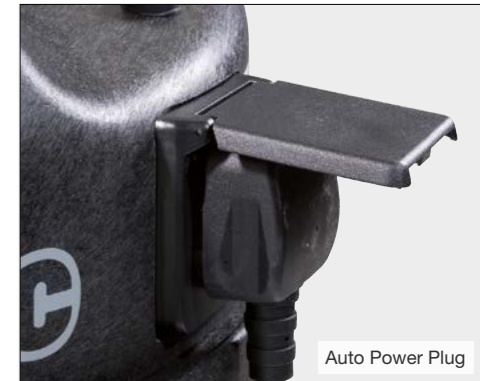
DustCare "Auto"

The ultimate combination of performance and automatic operation in conjunction with a whole selection of power tools both for woodworking and stoneworking.



All "A" machines are equipped with a pre-fitted power outlet to the power head. This enables a power tool to be connected to the vacuum cleaner. When the power tool is switched on, the vacuum cleaner switches on automatically. Equally, switching the power tool off, the vacuum cleaner will switch off. This is vitally useful when machines and workstation are not adjacent to each other. Using accessory kit NH5 e.g on scaffold or ladders will make the operation fully automatic, efficient and effective.

Note: Always ensure the correct clothing and breathing protection is used at all times.



Auto Power Plug



NED570

Model	NES570	NED570	NES900	NED900
Motor (W)	620	620 x 2	620	620 x 2
Use Type	Dry	Dry	Dry	Dry
Max Motor Only Airflow (L/sec)	48	96	48	96
Suction H ₂ O (MM)	2300	2300	2300	2300
Capacity (L)	23.0	23.0	40.0	40.0
Filter Bag Type	HepaFlo 3BM	HepaFlo 3BM	HepaFlo 3BM	HepaFlo 3BM
Filter Bag Layers	3	3	3	3
Power Cord (M)	10	10	10	10
Cleaning Range (M)	26.8	26.8	26.8	26.8
Hose Length (M)	2.4	2.4	2.4	2.4
Tool Head Width (MM)	400	400	400	400
Weight (KG)	15.26	15.26	24.05	24.05
Machine Dimensions WxLxH (MM)	415x415x645	415x415x645	490x800x880	490x800x880
Power Outlet Socket (Optional)	NES570A	NED570A	NES900A	NED900A
Kit (see page 19)	BB5	BB5	BB5	BB5

TEM390A / TEL390S TradeLine

Compact, tough and highly mobile, the TradeLine vacuum combines a specialist on tool extractor with a big clean-up machine to cover almost any application.

With more and more emphasis being put on health and safety within the construction industry, the demand for extraction vacuums increases year on year, this is where the TradeLine Range comes in.

“ Power and performance wherever and whenever you need it. ”

ADVANCED Filtration

Engineered with HEPA13 Filter for mixed dusts.

BUILT to Last

Made for tough with long-life 620W motor, proven to last many, many years.

POWERFUL & Efficient

Patented AirFlo Technology brings extremely high-efficiency, especially when coupled with our triple-layer filtration bags and TriTex filter.

EASE of Transit

All-terrain ready, large rear wheels, folding handle and long cleaning-reach.

INDUSTRIAL Use

Combines a specialist extractor vacuum and big clean-up machine for use in the workshop and on-site.



TEL390S



TEM390A



All-steel head construction (M-Class)

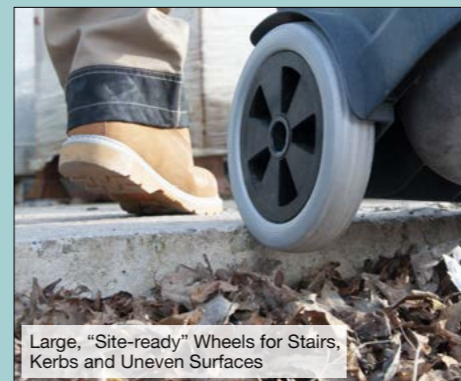
Large rear wheels are all-terrain ready

Hose cover keeps dust in during transportation

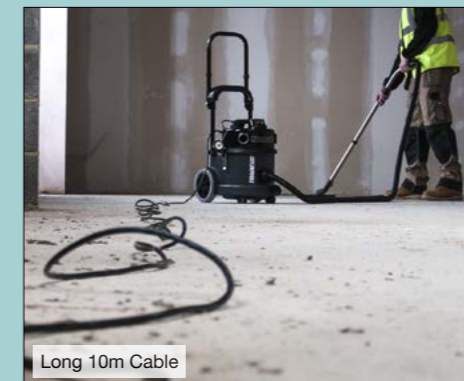
AirFlo Technology for high-efficiency

Power take-off for on tool extraction

Folding handle for excellent manoeuvrability



Large, "Site-ready" Wheels for Stairs, Kerbs and Uneven Surfaces



Long 10m Cable



Handy Tool Storage (Optional) 909224



Pull Handle for East of Transit



Specialist FreeFlo Tool for Hard Floors



1 HEPA13 Filter Cartridge
Certified HEPA13 filtration down to 0.3 microns at 99.95% efficiency. Our most advanced filtration in the Numatic commercial vacuum series.

2 TriTex Filter
Traps fine dust within its high-efficiency, triple-layer membrane.

3 Triple-layer HepaFlo Filter Bag
3-layers of high-efficiency filter material and unique self-seal tab, allowing for easy, clean and hygienic emptying.

Model	TEM390A	TEL390S
Motor (W)	620	620
Use Type	Dry	Dry
Motor Only Airflow (L/sec)	48	48
Suction H ₂ O (MM)	2300	2300
Capacity (L)	18	18
Filter Type	HEPA13/TriTex	HEPA13/TriTex
Dust Hazard Class (IEC / EN 60335-2-69)	M	L
Filtration Efficiency Classification	H13 (EN1822)	H13 (EN1822)
Filter Bag Type	HepaFlo 2BH	HepaFlo 2BH
Filter Bag Layers	3	3
Power Cord (M)	10	10
Cleaning Range (M)	28.0	28.0
Hose Length (M)	2.9	2.9
Tool Head Width (MM)	300	300
Weight (KG)	14.3	10.8
Dimensions WxLxH (MM)	400x450x1010	400x450x600
Kit (see page 18)	AS10	AS10

HZ370 H-Class

The HZ370 forms a valuable part of any environment where the control of hazardous and health endangering dusts is required.



H-CLASS Compliant

Engineered to meet the legal requirements when working with high-risk, non-explosive, hazardous dusts and materials, including asbestos.

COMPACT & Ready

Compact design is easily stored away and always on-hand when you need it.

TAKE Control

The HEPA filter unit is mounted in an all-steel, secure module with a separate primary pre-filter in the container itself.

HIGH Efficiency

Engineered with an advanced filtration system, including HEPA13 filter, TriTex filter and HepaFlo filter bags.

POWERFUL & Professional

In it for the long-haul, the machine's powerful, long-life 960W motor is proven to deliver powerful, professional and efficient results.



HZ370

HZ390L/S H-Class

H-Class equipment is the legal requirement when working with high-risk, non-explosive, hazardous dusts and materials, including asbestos.

The HZ390 is engineered to meet this demanding standard, so you can breathe easy.

Incorporating a H13 filter module and fully meeting the "H" standard, the HZ range is perfect for dealing with hazardous dusts and materials.



All-terrain Large Rear Wheels

H-CLASS Compliant

Engineered to meet the legal requirements when working with high-risk, non-explosive, hazardous dusts and materials, including asbestos.

TAKE Control

The HEPA filter unit is mounted in an all-steel, secure module with a separate primary pre-filter in the container itself.

HIGH Efficiency

Engineered with an advanced filtration system, including HEPA H13 filter, TriTex filter and HepaFlo filter bags.

ALL-Terrain

With large rear wheels, the HZ is easy to transport across rough surfaces and up stairs.

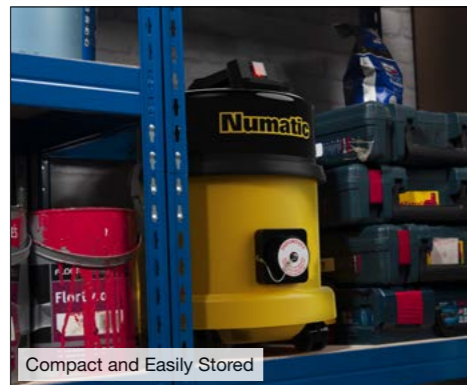
COMPACT & Ready

With a compact, 390 container design and folding pull handle (HZ390L only), the HZ can be neatly stored away, ready when you need it.



Easy, Clean and Safe Emptying

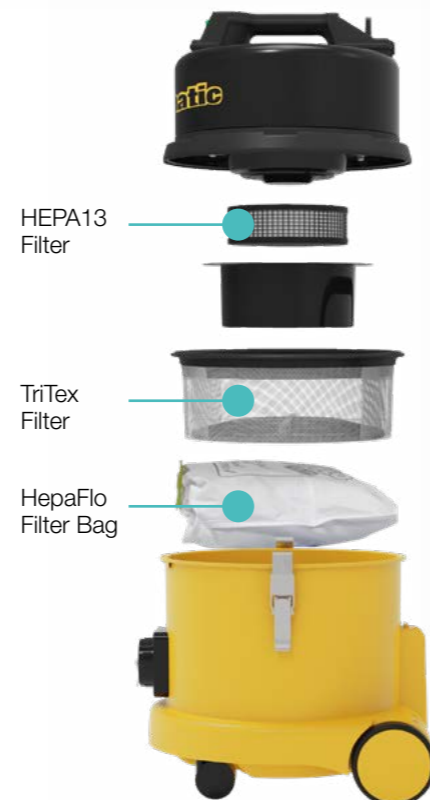
With a compact 370 container design, the HZ370 can be neatly stored away and ready when you need it.



Compact and Easily Stored



Air Diffuser



HEPA13 Filter

TriTex Filter

HepaFlo Filter Bag



HZ390L

HZ390S

Model	HZ370
Motor (W)	960
Use Type	Dry
Motor Only Airflow (L/sec)	48
Suction H ₂ O (MM)	2500
Capacity (L)	15
Filter Type	TriTex
Dust Hazard Class (to Annex 69 of EN 60335-2)	H
Filtration Efficiency Classification	H13 (EN1822)
Filter Bag Type	HepaFlo 2BH
Filter Bag Layers	3
Power Cord (M)	10
Cleaning Range (M)	26.0
Hose Length (M)	2.0
Weight (KG)	11.0
Dimensions WxLxH (MM)	355x355x570
Kit (see page 18)	AA18

Model	HZ390S	HZ390L
Motor (W)	960	960
Use Type	Dry	Dry
Motor Only Airflow (L/sec)	48	48
Suction H ₂ O (MM)	2500	2500
Capacity (L)	18	18
Filter Type	TriTex	TriTex
Dust Hazard Class (to Annex 69 of EN 60335-2)	H	H
Filtration Efficiency Classification	H13 (EN1822)	H13 (EN1822)
Filter Bag Type	HepaFlo 2BH	HepaFlo 2BH
Filter Bag Layers	3	3
Power Cord (M)	10	10
Cleaning Range (M)	26.0	26.0
Hose Length (M)	2.0	2.0
Weight (KG)	11.2	12.6
Dimensions WxLxH (MM)	400x450x600	400x450x1010
Kit (see page 18)	AA18	AA18

Please Note: Local regulations, safety standards and usage instructions must be upheld in order to ensure complete safety of use and fully meet the requirements of working with H-Class dusts and materials. Always seek expert advice and conduct a thorough risk assessment before use.

NEW HZC390L/S **H-Class**

Designed, engineered and built with the tradesman in mind, the HZC390 offers a safe and convenient solution for those whose work brings them into infrequent contact with hazardous dusts and materials.

Equipped with a sealed and disposable HEPA H13 filter cartridge, all dust is safely contained, meaning users can change the filter as and when they need to.

UNPARALLELED Safety

All dust is safely contained within a sealed, H-Class, HEPA13 filter cartridge.

POWERFUL & Efficient

Professional, long-life, 960W motor delivers powerful and efficient results.

BUILT to Last

Made for tough with all-steel power head.

ALL-Terrain

With large rear wheels, the HZC is easy to transport across rough surfaces and up stairs.

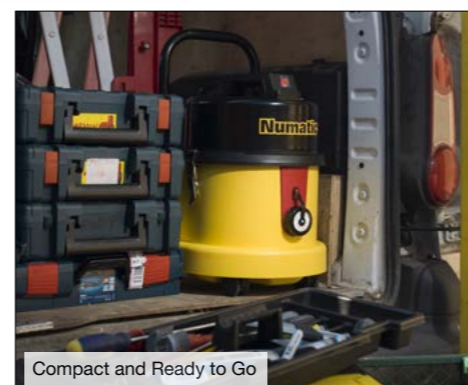
COMPACT & Ready

With a compact, 390 container design and folding pull handle (HZC390L only), the HZC can be neatly stored away, ready when you need it.



HZC390S

HZC390L



Compact and Ready to Go



Easy Lift-out Disposable Cartridge



All-terrain Large Rear Wheels



All-Steel Head
Heavy-duty power head.



HZC Disposable Cartridge
HEPA H13 Filter conforms to EN1822. Fits all HZC machines.



Robust Drum
Tough drum construction with all-terrain large rear wheels for stairs and uneven surfaces.

HZC Cartridge

All dust is safely contained within a sealed, HEPA13 filter cartridge, so you can breathe easy.



Watch the full video at:
numatic.co.uk

Model	HZC390S	HZC390L
Motor (W)	1000	1000
Use Type	Dry	Dry
Motor Only Airflow (L/sec)	48	48
Suction H ₂ O (MM)	2500	2500
Capacity (L)	13	13
Filter Type	TriTex	TriTex
Dust Hazard Class (to Annex 69 of EN 60335-2)	H	H
Filtration Efficiency Classification	H13 (EN1822)	H13 (EN1822)
Power Cord (M)	10	10
Cleaning Range (M)	26.0	26.0
Hose Length (M)	2.0	2.0
Weight (KG)	12.2	13.0
Dimensions WxLxH (MM)	400x450x600	400x450x1010
Kit (see page 18)	AA16	AA16

HZ/HZD570, HZ/HZD900 **H-Class**

In the selection of any dust control machine, it is vitally important that the size, power and capacity are given serious consideration from the outset, as the right choice will play an important and on-going part in terms of user satisfaction.

The 570/900 series provides a choice of Simplex one motor or Duplex two motor models.

The Duplex models have a 100% increase in airflow over the Simplex units and would be the preferred selection where larger volumes of fine material need to be collected. The power head is of all-steel construction with bag full indicator and NuCable plugged mains cable system.



The H-Class filter module is securely mounted within our all-steel housing and provides a high efficiency standard in use. The container is of a one piece Structofoam construction.



ADVANCED Filtration

H-Class Compliant, engineered with HEPA13 filter module.

BUILT to Last

Made for tough with all-steel power head.

POWERFUL & Efficient

Professional, long-life, 960W motor delivers powerful and efficient results.

CLEAN for Longer

All-terrain ready, large rear wheels, folding handle and long cleaning-reach.

EASY, CLEAN & Safe Emptying

High-efficiency, triple-layer, giant MicroFlo multistage dust bags for fine dust collection.



HZ/HZD900



Triple-layer Filter Bags



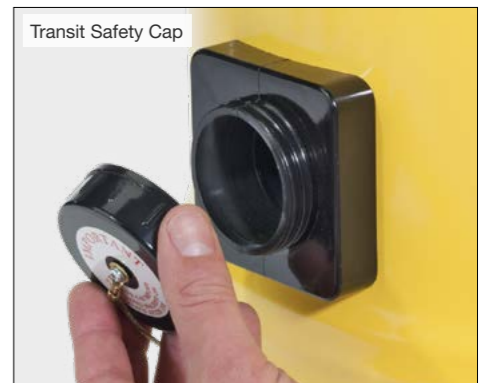
Plugged Easy Cable Change



Stainless Steel Gulper / Scraper Tool



All-terrain Large Rear Wheels



Transit Safety Cap



HZ/HZD570



H-Class Micro Filter

Model	HZ570	HZ900	HZD570	HZD900
Motor (W)	960	960	960 x 2	960 x 2
Use Type	Dry	Dry	Dry	Dry
Motor Only Airflow (L/sec)	48	48	96	96
Suction H ₂ O (MM)	2500	2500	2500	2500
Capacity (L)	23	40	23	40
Filter Type	PermaTex	PermaTex	PermaTex	PermaTex
Dust Hazard Class (IEC / EN 60335-2-69)	H	H	H	H
Filtration Efficiency Classification	H13 (EN1822)	H13 (EN1822)	H13 (EN1822)	H13 (EN1822)
Filter Bag Type	HepaFlo 3BH	HepaFlo 4BH	HepaFlo 3BH	HepaFlo 4BH
Filter Bag Layers	3	3	3	3
Power Cord (M)	10	10	10	10
Cleaning Range (M)	26.0	26.0	26.8	26.8
Hose Length (M)	2.0	2.0	2.4	2.4
Weight (KG)	18	28	20	30
Machine Dimensions WxLxH (MM)	415x415x746	490x800x880	415x415x746	490x800x880
Kit (see page 18 & 19)	AA19	AA20	BB19	BB20

AS10 908283

601008	Stainless Steel Extension Tube (x2)	601430	290mm FreeFlo Floor Tool	601145	150mm Upholstery Tool
601052	Stainless Steel Tube Bend with NPC Volume Control	601141	Double Taper Hose / Tool Adaptor	601146	150mm Slide-on Brush for Upholstery Tool
601102	2.9m NuFlex Threaded Hose	601142	240mm Crevice Tool	601176	Multi Size Power Tool Adaptor
900918	300mm MultiFlo Dry Brush Tool	601144	65mm Soft Dusting Brush		

BB5 607335

602102	2.4m NuFlex Threaded Hose (38mm)	602920	Stainless Steel Extension Tube (x2)	602162	152mm Rubber Brush with Stiff Bristles
602919	Stainless Steel Tube Bend	602381	400mm ProFlo Brush Tool		

AA16 909539

914413	2.0m BoFlex Parallel Hose	602159	38 / 32mm Adaptor	601917	280mm Stainless Steel Gulper / Scraper Tool (32mm)
601142	240mm Crevice Tool	601144	65mm Soft Dusting Brush		
602161	152mm Rubber Brush with Soft Bristles	601141	Double Taper Hose / Tool Adaptor		

BB19 607349 / BB20 607350

602102	2.4m NuFlex Threaded Hose	604144	65mm Soft Dusting Brush	604116	Primary PermaTex Filter for 356mm Machine
604017	10 x (NVM-3BH) HepaFlo Dust Bags (BB19 only HZD570)	908229	Roll of 10 x 120L Waste Bags (700mm x 1100mm), Grey	602159	38 / 32mm Adaptor
604019	10 x (NVM-4BH) HepaFlo Dust Bags (BB20 only HZD900)	602160	305mm ABS Crevice Tool		
602161	152mm Rubber Brush with Soft Bristles	602923	280mm Stainless Steel Gulper / Scraper Tool (38mm)		

AA18 902756

914413	2.0m BoFlex Parallel Hose	602159	38 / 32mm Adaptor	601917	280mm Stainless Steel Gulper / Scraper Tool (32mm)
604016	10 x (NVM-2BH) HepaFlo Dust Bags	601144	65mm Soft Dusting Brush	604165	TriTex Filter for 305mm Machine
601142	240mm Crevice Tool	908229	Roll of 10 x 120L Waste Bags (700mm x 1100mm), Grey		
602161	152mm Rubber Brush with Soft Bristles	601141	Double Taper Hose / Tool Adaptor		

HAS 607661

602111	2.6m Anti Static 38mm Hose Assembly	602929	ATX Stainless Steel Extension Tube (x2)	604019	10 x (NVB-4BH) HepaFlo Dust Bags
602112	ATX 400mm Widetrack Brush Tool	909185	Conductive Dusting Brush	602923	280mm Stainless Steel Gulper / Scraper Tool (38mm)
602919	Stainless Steel Tube Bend	602125	ATX 130mm Conductive Rubber Gulper Tool	908229	Roll of 10 x 120L Waste Bags (700mm x 1100mm), Grey

AA19 902757 / AA20 902758

914413	2.0m BoFlex Parallel Hose	602161	152mm Rubber Brush with Soft Bristles	601141	Double Taper Hose / Tool Adaptor
604017	10 x (NVM-3BH) HepaFlo Dust Bags (AA19 only HZ570)	602159	38 / 32mm Adaptor	601917	280mm Stainless Steel Gulper / Scraper Tool (32mm)
604019	10 x (NVM-4BH) HepaFlo Dust Bags (AA20 only HZ900)	601144	65mm Soft Dusting Brush	604116	Primary PermaTex Filter for 356mm Machine
601142	240mm Crevice Tool	908229	Roll of 10 x 120L Waste Bags (700mm x 1100mm), Grey		

BA5 607167

602102	2.4m NuFlex Threaded Hose (38mm)	602930	Aluminium Extension Tube (x2)	602162	152mm Rubber Brush with Stiff Bristles
602931	Aluminium Tube Bend	602381	400mm ProFlo Brush Tool		

C14 607384

603109	4.0m HiloFlex Threaded Hose	603114	400mm Brush Tool for Floor Gulper
603112	Stainless Steel Floor Gulper for HiloFlex Hose	603141	152mm Rubber Brush with Stiff Bristles

G1 607701

608001	3.0m HiloFlex Hose	608027	Black Floor Gulper Tool
--------	--------------------	--------	-------------------------

HepaFlo / MicroFlo

It is vitally important that for any industrial cleaning or fine dust collection activity, a trial and selection of the correct dust collection bag is given serious thought from the very outset.

For the full range of 570 and 900 models, there are two main patented dust bag specifications, the HepaFlo and the MicroFlo. Which of these will provide you with the best performance and results will depend on each individual application.

HepaFlo

This is the first port of call for normal industrial vacuum cleaner operation, providing excellent all round performance.

MicroFlo (Patent Applied For)

Whenever the use can be described as a fine dust application, then MicroFlo Technology needs to be considered, as it is designed to maximise performance and filling in these more difficult circumstances.

IMPORTANT NOTE

The MicroFlo performance can sometimes be too good when a HepaFlo would be more than sufficient. This can create over filling, resulting in difficulty in removing the full bag from the machine in use.

In applications such as chimney sweeping, woodworking, etc. where ultra fine dust is not the main problem, the HepaFlo bags provide excellent performance. If fine dust and volume is evident then MicroFlo is the superior and only choice.



MicroFlo Filter bag cutaway



If in doubt, do a test with both types and judge by actual results. The whole purpose of the HepaFlo/MicroFlo system is to ensure clean performance and clean disposal in often difficult circumstances.

H & M-Class Machines

All of our H & M-Class ranges are designed to comply and exceed the requirements of BS Standard EN 60335-2-69. Each and every part or feature is dedicated to providing a machine that will operate in demanding, professional environments.

Every machine is an assembly of many different components and when completed, the "WHOLE" assembly needs to be tested to ensure total compliance with not so much as a single screw unsecured.

Each machine is fully "End of Line" tested and an appropriate certificate issued with the machine to confirm the test and certify its compliance.

The filter cartridge is pre-tested prior to the machine build and spare filter supplies are equally pre-tested to ensure compliance when replaced in an operating machine.

The regulatory discipline in the H type world does not stop at the product alone and almost each and every application will be different in terms of the environment and, equally, in the material needing to be vacuum collected as part of the Health and Safety requirement. Each and every operator should wear the correct safety clothing and be equipped with respiratory equipment appropriate to the application.

Once used for a hazardous substance, collection machines will need to be subjected to a decontamination procedure and this must be carried out by professionals with all the necessary facilities.



Class Testing Facility



Note: Each environment and application will require a risk assessment to determine the correct vacuum selection. Always ensure the correct clothing and breathing protection is used at all times

Lined writing area for page 22.

Lined writing area for page 23.

Head Office

Numatic International Limited

Chard, Somerset TA20 2GB UNITED KINGDOM

Tel: 01460 68600 numatic.com

Numatic International S.A.S
13/17 rue du Valengelier
EAE la Tuilerie, 77500 Chelles
FRANCE

Tel: 01 64 72 61 61
numatic.fr

**Numatic International
Schweiz AG.**
Sihlbruggstrasse 3A
6340 Baar
SCHWEIZ

Tel: 041 768 07 60
numatic.ch

Numatic International SLU
La Forja, 41, 08840
Viladecans, Barcelona
SPAIN

Tel: 34 936 472 222
numatic.es

Numatic International (Pty.) Ltd.
16th & Pharmaceutical Roads
Midrand, Gauteng, S.A. 1685
SOUTH AFRICA

Tel: 0861 686 284
numatic.co.za

Numatic International ULDA
Rua da Boa Viagem, 177
4470 - 210 Moreira Maia
PORTUGAL

Tel: 351 220 047 700
numatic.pt

Numatic International Italy SRL
Via Luigi Galvani, 2
Z.I. Talponedo
33080 Porcia (PN)
ITALY

Tel: (39) 0434 046211
Web: numatic.it

Numatic International GMBH
Fränkische Straße 15-19,
30455 Hannover
DEUTSCHLAND

Tel: 05 11 98 42 16 0
numatic.de

Numatic International BV
Vennootsweg 15
2404 CG, Alphen aan den Rijn
NEDERLAND

Tel: 0172 467 999
numatic.nl

Numatic